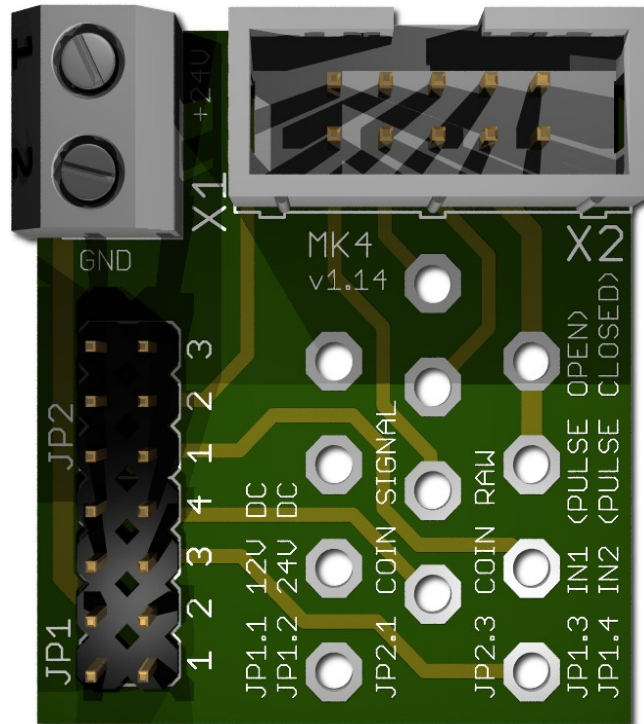


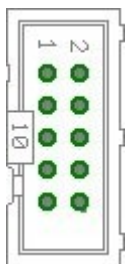


Bernd Karle
 Hard- und Softwareentwicklung
 Blauenweg 6
 79379 Müllheim, Germany
 Phone: +49 (0)7631-172375
 E-Mail: info@casino-software.de
 Web: <http://www.casino-software.de>

HOPPER-Adapter MK4 v1.14



Occupation of the 10 pin plug (Azkoyen compatible):



- Pin 1,2,3 = +V (+12V or +24V DC)
- Pin 4,5 = -V (GND)
- Pin 6 = Full sensor
- Pin 7 = Motor run (IN3)
- Pin 8 = Not used (security / error)
- Pin 9 = Coin signal (select by JP2.1 or JP2.3)
- Pin 10 = Empty sensor

X1-1: +24V DC
 X1-2: GND

JP1.1 : +12V Hopper, power from CASH-Interface
 JP1.2 : +24V Hopper, power from external power supply on plug X1
 JP1.3 : IN1 (mode selector)
 JP1.4 : IN2 (mode selector)

Mode 0 (Direct switching 24V) : JP1.3 open + JP1.4 open
 Mode 1 (Logic control / motor run) : JP1.3 closed + JP1.4 closed
 Mode 2 (Coin counting / pulse) : JP1.3 open + JP1.4 closed

JP2.1 : Coin (µP Sensor Output) => short JP2.1 to JP2.2
 JP2.3 : Coin raw (Raw Sensor Output) => short JP2.3 to JP2.2