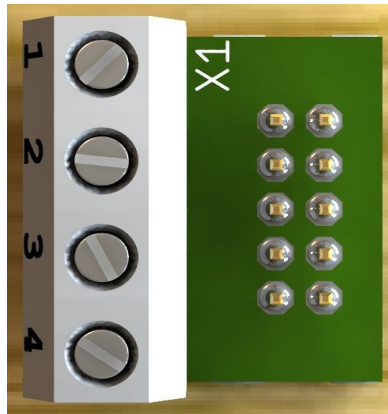




## Adapter ND-300 v1.01

The ND-300 adapter can be plugged into the CASH-Interface2 HOPPER connector. It offers the hopper's motor run pin (OUT) and empty sensor (IN) so you can connect easily a ND-300 bill dispenser and use it in hopper mode.

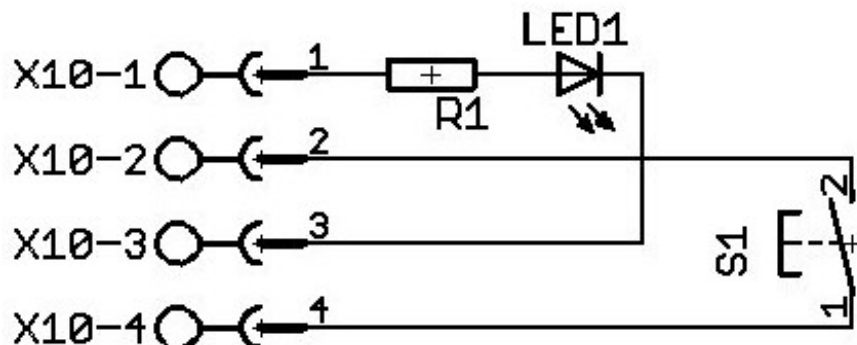
The adapter can also be used to have an extra INPUT and OUTPUT for the CASH-Interface2 if there is no hopper connected. For example we use this for the photo booth control to have external illuminated push buttons.



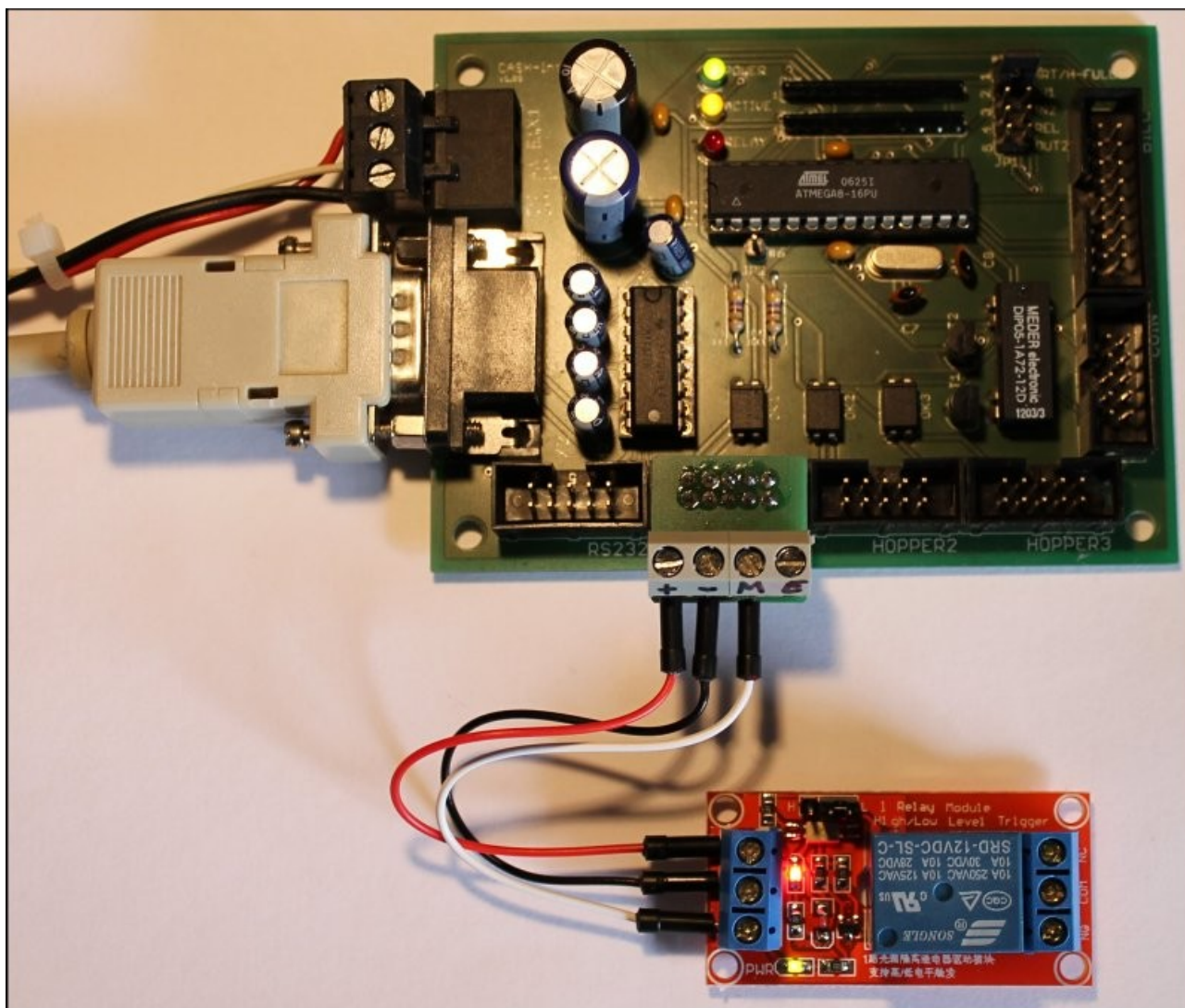
### Occupation of the 4 pole plug:

Usage:	ND-300	PHOTO BOOTH
1 = +12V DC	GRAY	ILLUMINATION +
2 = GND	BLACK	START button
3 = Motor	ORANGE	ILLUMINATION -
4 = Empty	GREEN	START button

### Connection of an illuminated push button:



## CASH-Interface2 with ND-300 adapter + external relays:



We offer relays and several other equipment in our web shop at:  
<http://www.casino-software.de/shop>